

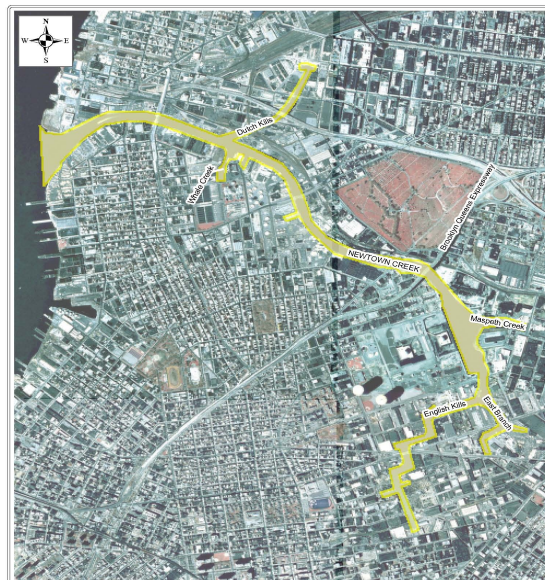
Superfund Process Comprehensive Environmental Response, Compensation and Liability Act

Superfund Process

- Discovery of toxic waste disposal sites prompted passage by Congress in 1980
- Empowers EPA to compel responsible parties to pay for or conduct necessary response actions
- Provides federal funds for cleanup of hazardous waste sites and to respond to emergencies involving hazardous substances

Superfund Process

- Site Placed on National Priorities List
- Remedial Investigation/Feasibility Study
- Proposed Remedy
- Record of Decision
- Remedial Design
- Remedial Action
- Site Deletion
- Monitoring, Maintenance (as appropriate)



SOURCE 1. New York State Information Mapping Cabinet (NYIMC) 2004 Brooklyn_02_2004_104 and Brooklyn_02_2004_104_001 Brooklyn_02_2004_104_001 Brooklyn_02_2004_104_001_001 Brooklyn_02_2004_104_001_001_001 Downloaded from the Internet: August 2004 to 104_001_001_001_001	TITLE Figure 1 Site Location Map Newtown Creek Brooklyn/Queens, New York
PROJECT Expanded Site Inspection Newtown Creek	
CLIENT NAME U.S. EPA	WESTJIN
	DATE January 2009
	FIGURE # 1

For additional information and updates on EPA activities at the
Newtown Creek site contact:

Wanda Ayala
ayala.wanda@epa.gov
Community Involvement Coordinator, US EPA
212-637-3676

Caroline Kwan
kwan.caroline@epa.gov
Remedial Project Manager, US EPA
212-637-4275

www.epa.gov/region02/superfund/npl/newtowncreek