



Newtown Creek CAG Meeting

February 6, 2014

Eileen Mahoney

- City's Role in Newtown Creek Superfund Site Study
Eileen Mahoney, Superfund
- Green Infrastructure Plans in Newtown Creek Neighborhoods
Margot Walker, Green Infrastructure
- Flow Monitoring Program in Newtown Creek
Anthony Maracic, Wastewater Treatment
- Ecological Services/Restoration in NYC Waterways
John McLaughlin, Ecological Services

- NYC has signed a Consent Order with EPA and 5 other PRPs to conduct the Remedial Investigation and Feasibility Study for the CERCLA Site

6 PRPs signed the Order with EPA

Newtown Creek Group (5 PRPs)

- ❖ Exxon Mobil
- ❖ National Grid
- ❖ Phelps Dodge Refining Corporation
- ❖ BP
- ❖ Chevron

NYC

Others not named

City Has Funded 25% of All Costs Incurred by Anchor, the Consultant for the Study in Phase 1 (\$22 million) City's share \$6 million

Additional Phase 1 Studies Were Conducted By City at City's Expense:

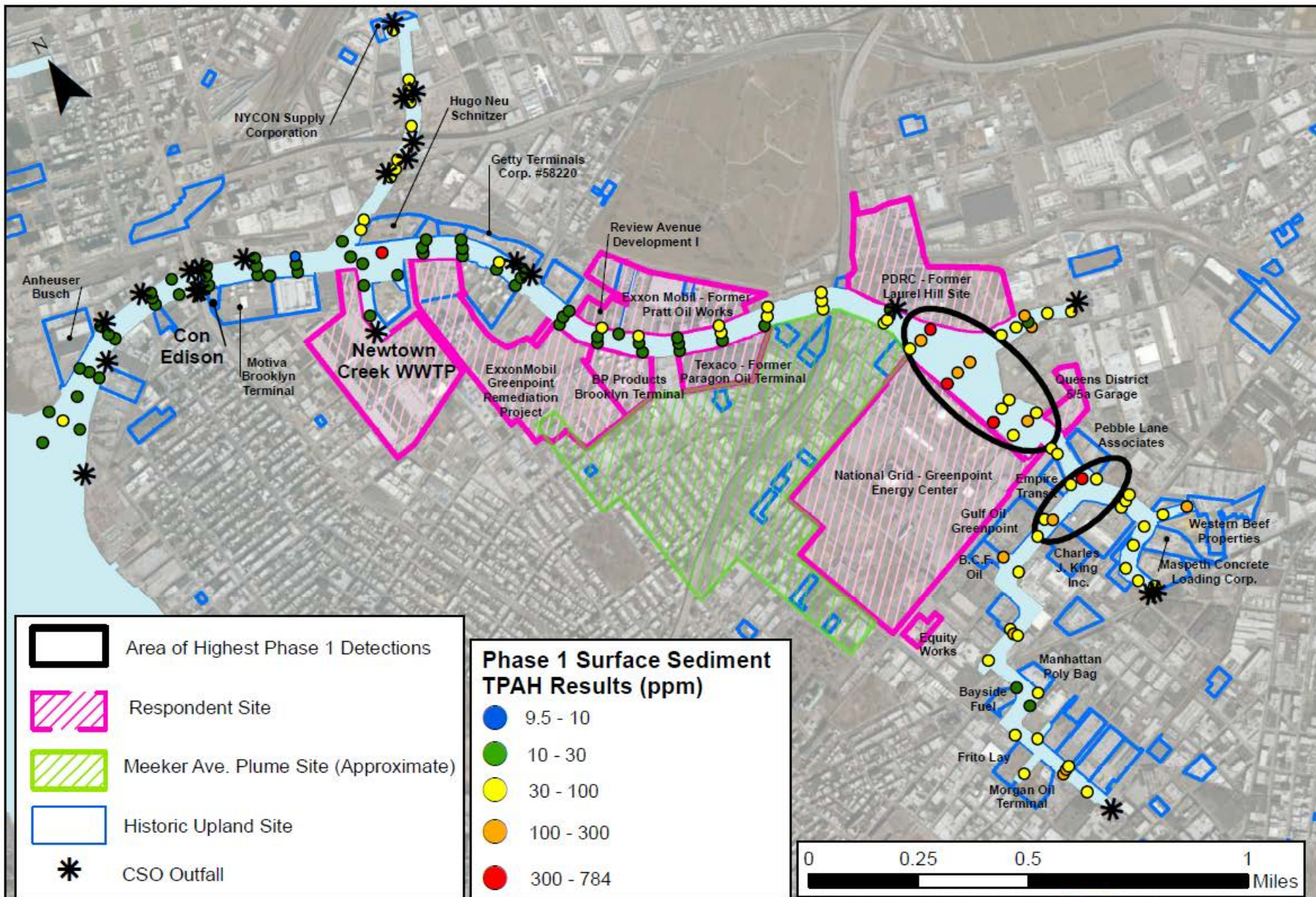
- ❖ Flow Monitoring Study
 - ❖ Flow Monitors Were Installed at a Total of 5 CSOs on Newtown Creek to Collect Real Time Data on Flows at these Locations. (\$1 million)
- ❖ Groundwater Investigation to Determine How Contaminated Groundwater Enters the Creek (\$500K)

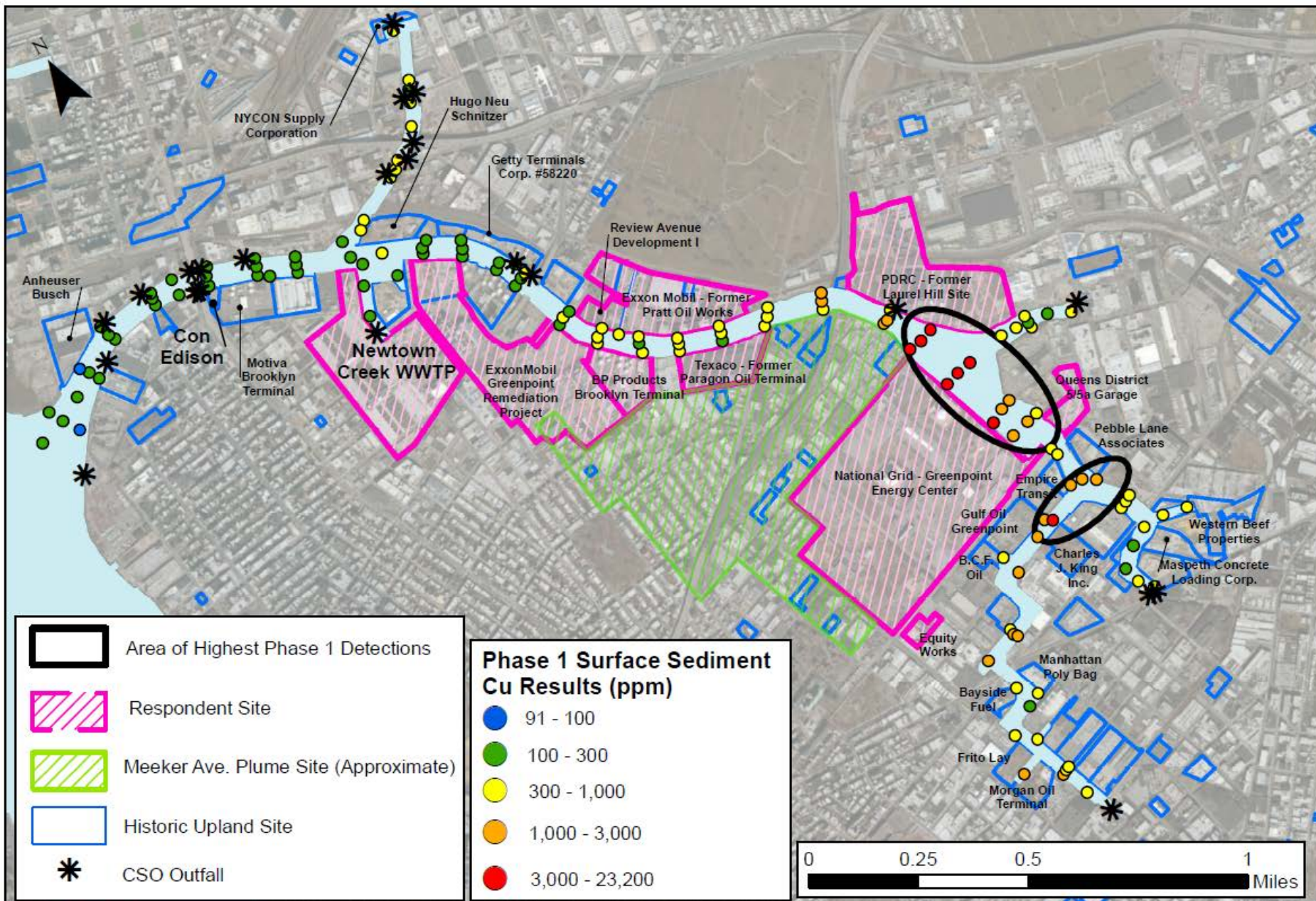


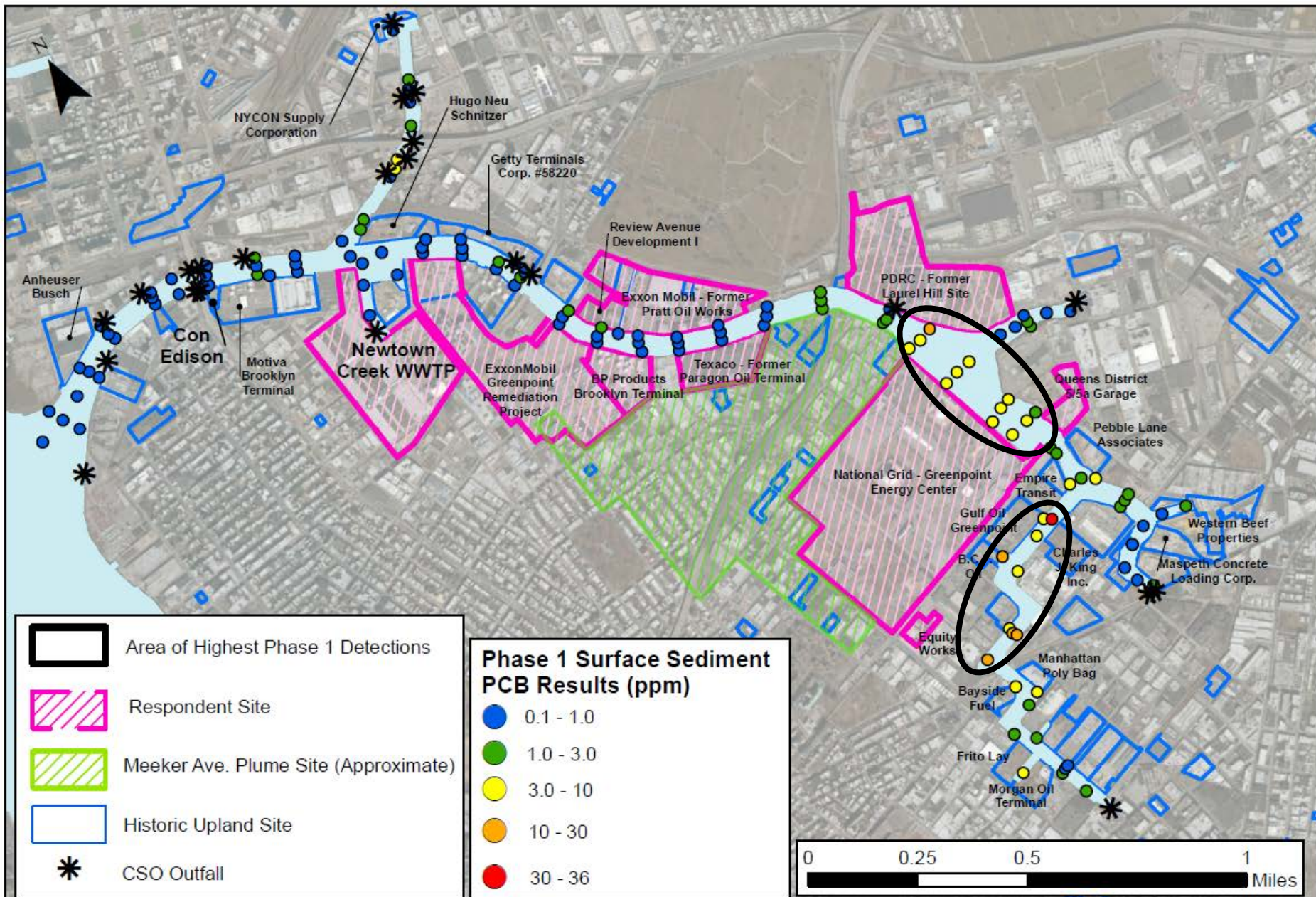
Sampling - Procedure



28







- **Phase 2 Sampling To Begin May, 2014**
- Cost expected to be \$30 million
- Total for Phase 1 and 2 is \$55 million
- ❖ **Sampling of Pipes Discharging to the Creek**
 - ❖ CSOs
 - ❖ Storm water Pipes
 - ❖ Groundwater Treatment System Pipes
 - ❖ Privately Owned Drainage Pipes (PRP Sites)
 - ❖ Highway Drains
- ❖ Contaminated Groundwater Flowing Into the Creek, below surface
 - Groundwater will be sampled from below the water to measure chemicals flowing to the Creek
- ❖ Sediment and Surface Water to Supplement Phase 1 Data