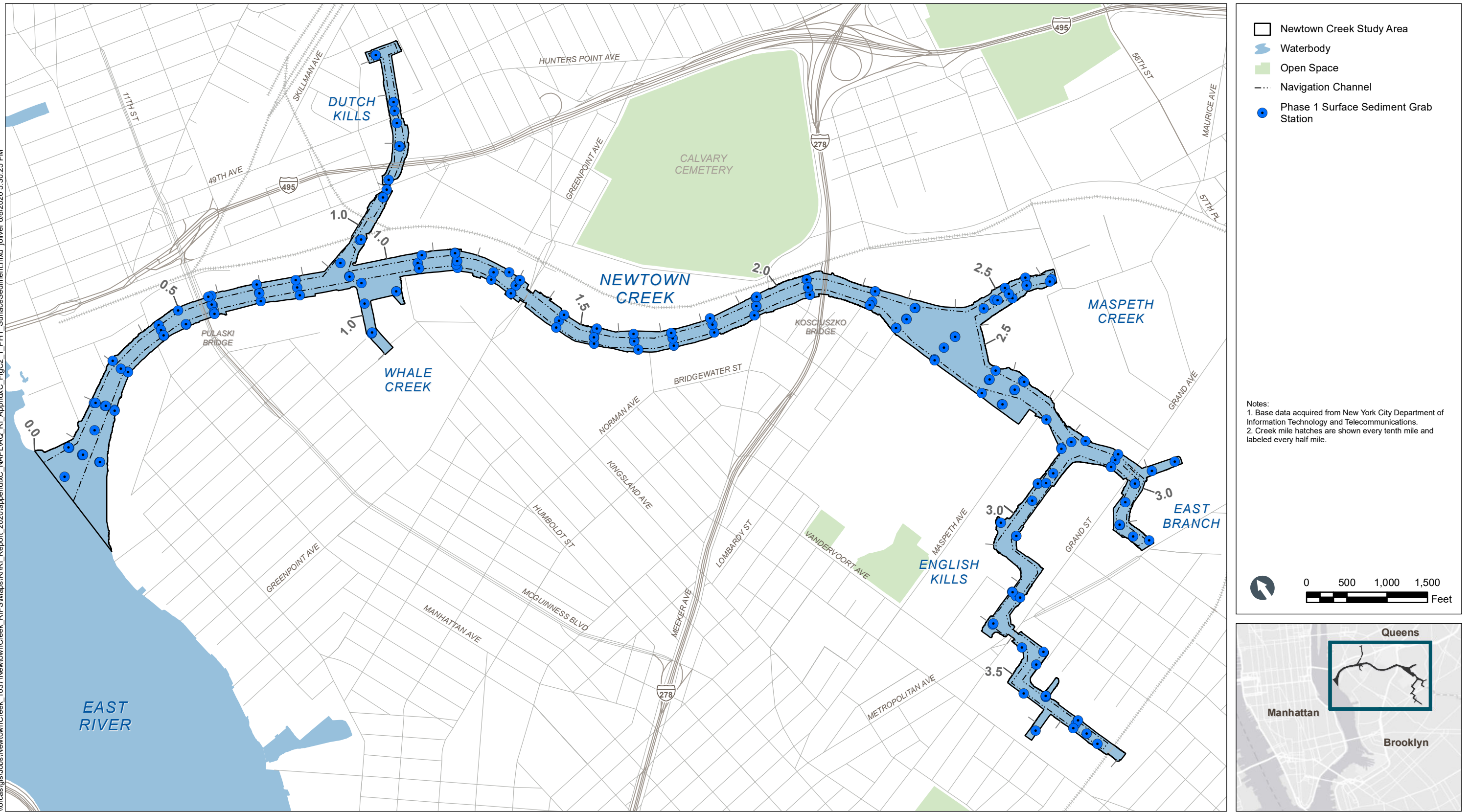
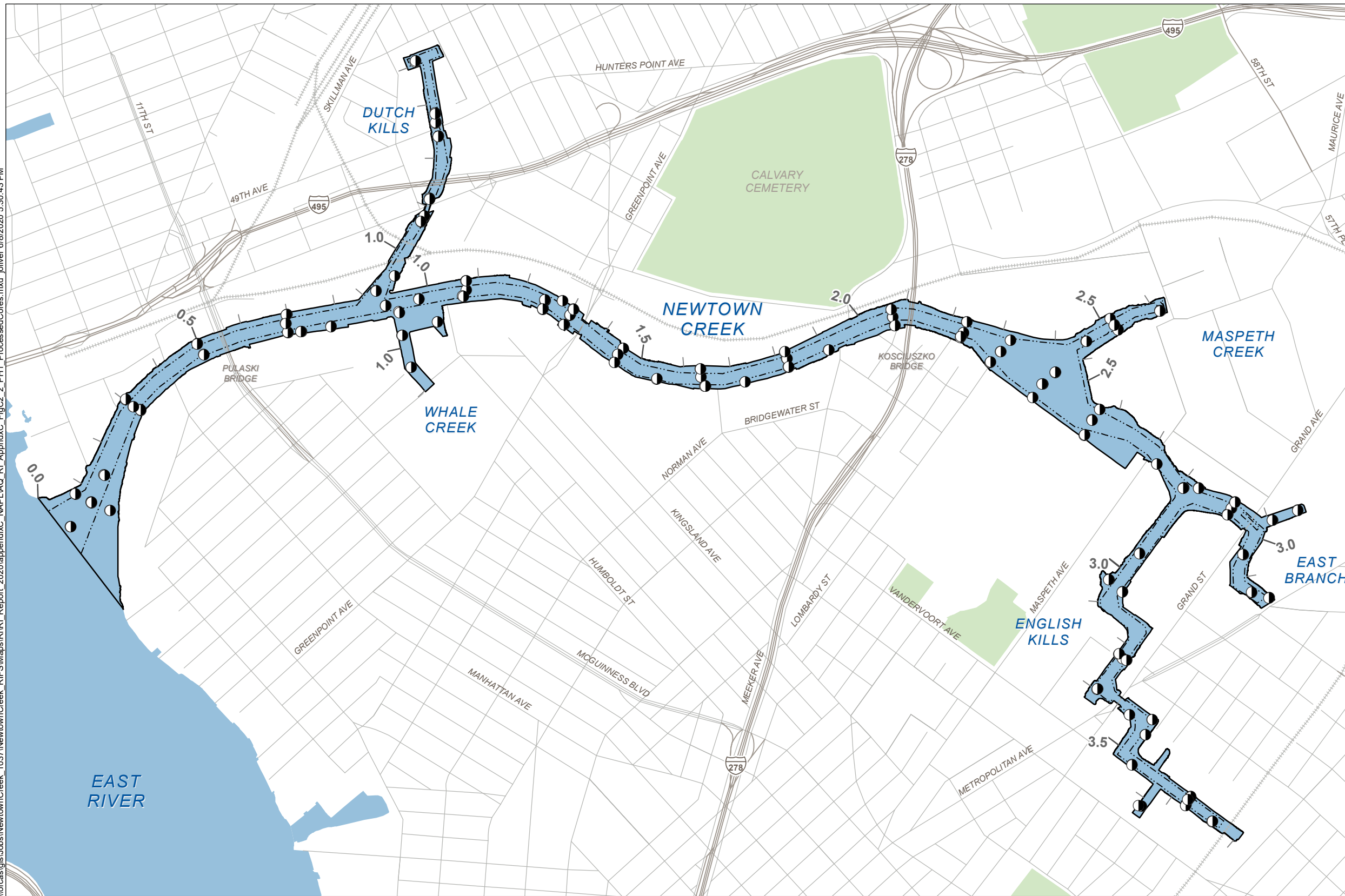


\\orcaas\gis\Jobs\NewtownCreek\_1037\NewtownCreek\_RIFS\Maps\RI\RI\_Report\_2020\appendixC\_NAPL\AQ\_RI\_AppendC\_FigC2\_1\_PH1\_SurfaceSediment.mxd\_joliver\_6/8/2020 5:30:25 PM

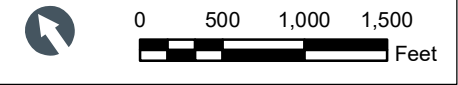


\\orcaas\gis\Jobs\NewtownCreek\_1037\NewtownCreek\_RIFS\Maps\RI\RI\_Report\_2020\appendixC\_NAPL\AQ\_RI\_AppendC\_FigC2\_2\_PH1\_ProcessedCores.mxd\_joliver 6/18/2020 5:30:43 PM



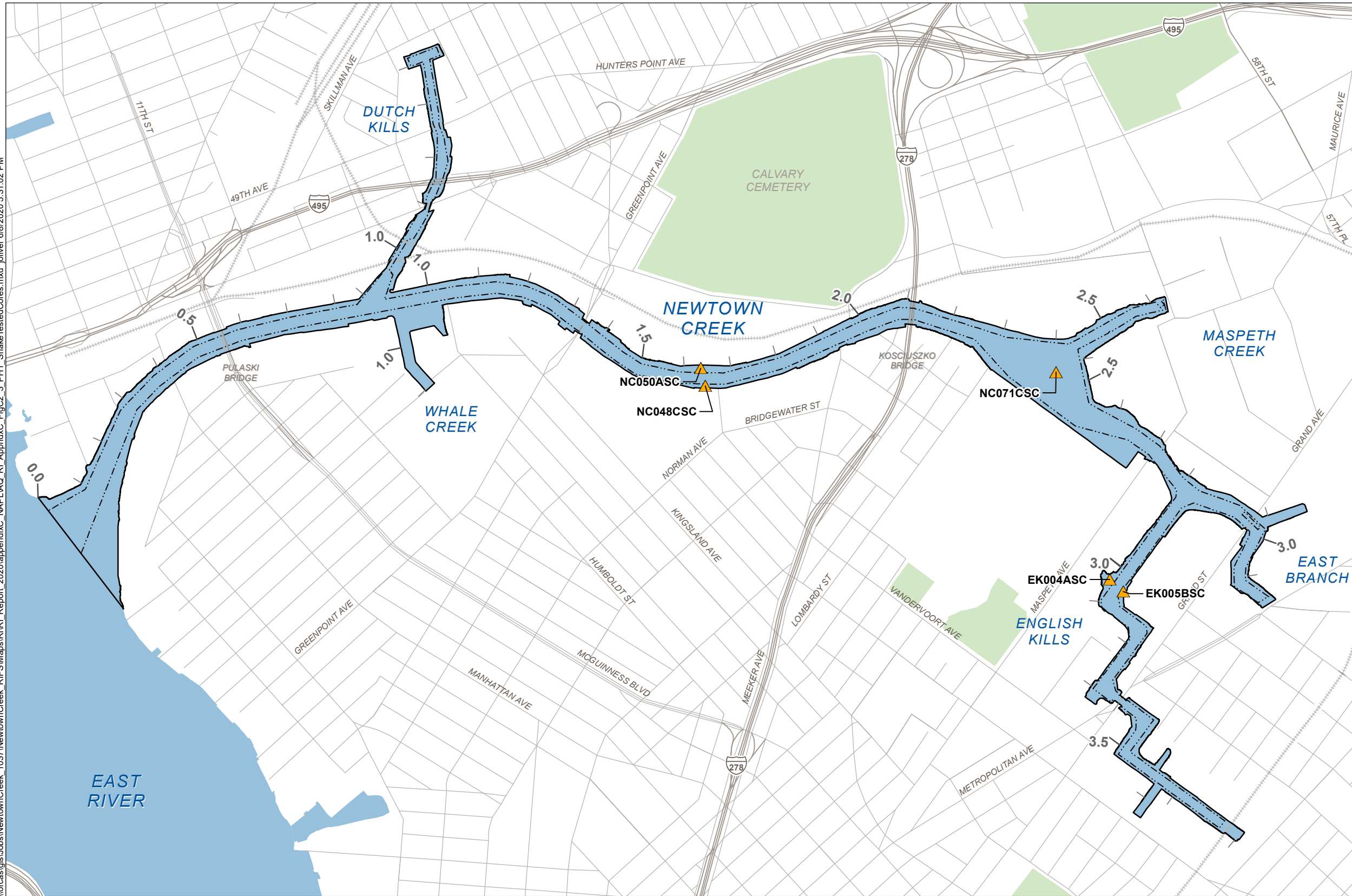
- Newtown Creek Study Area
- ~ Waterbody
- Open Space
- Navigation Channel
- Phase 1 Subsurface Coring Station

Notes:  
 1. Base data acquired from New York City Department of Information Technology and Telecommunications.  
 2. Creek mile hatches are shown every tenth mile and labeled every half mile.



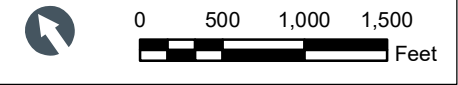


\\orcaas\gis\Jobs\NewtownCreek\_1037\NewtownCreek\_RIFS\Maps\RI\RI\_Report\_2020\appendixC\_NAPL\AQ\_RI\_AppendC\_FigC2\_3\_PH1\_ShakeTestedCores.mxd\_joliver 6/8/2020 5:31:02 PM

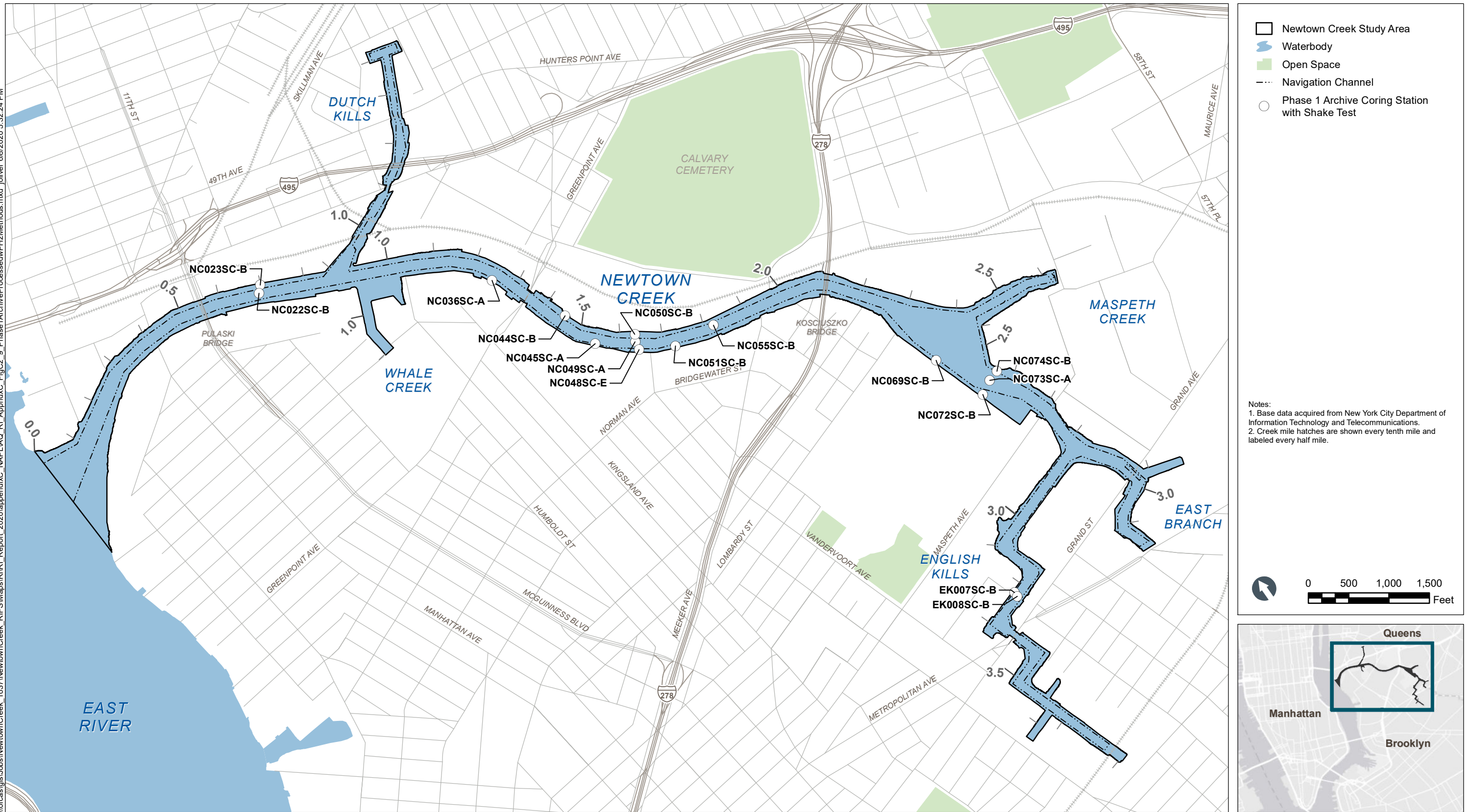


- Newtown Creek Study Area
- Waterbody
- Open Space
- Navigation Channel
- Phase 1 Shake-Tested Coring Station

Notes:  
 1. Base data acquired from New York City Department of Information Technology and Telecommunications.  
 2. Creek mile hatches are shown every tenth mile and labeled every half mile.

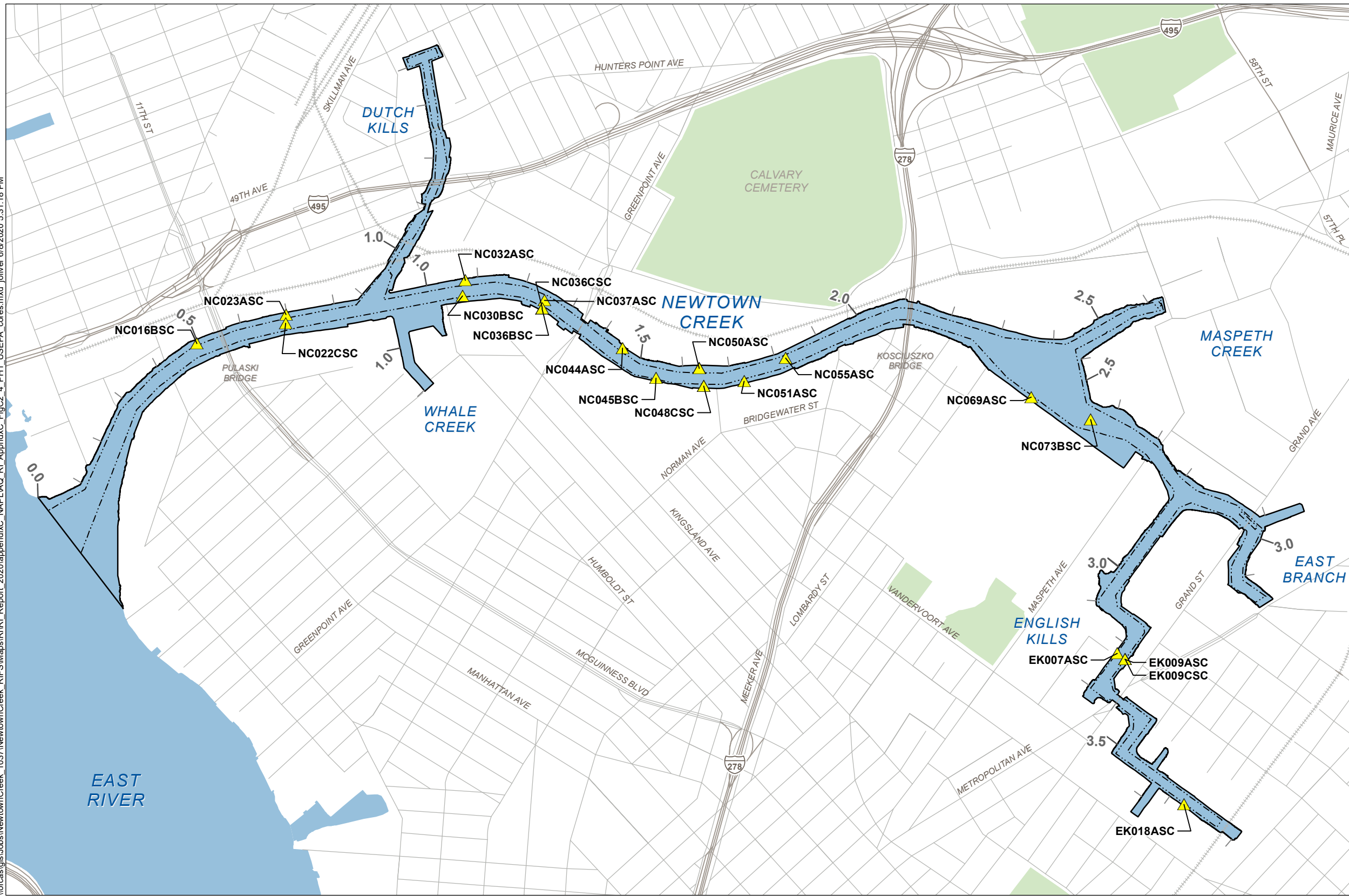


\\orcaas\gis\Jobs\NewtownCreek\_1037\NewtownCreek\_RIFS\Maps\RI\RI\_Report\_2020\appendixC\_NAPL\AQ\_RI\_AppendC\_FigC2\_9\_Phase1ArchiveProcessedPH2Methods.mxd | oliver 6/8/2020 5:32:24 PM



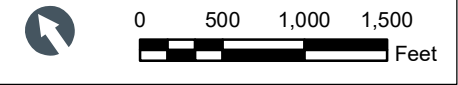


\\orcaas\gis\Jobs\NewtownCreek\_1037\NewtownCreek\_RIFS\Maps\RI\RI\_Report\_2020\appendixC\_NAPL\AQ\_RI\_AppendC\_FigC2\_4\_PH1\_USEPA\_cores.mxd\_joliver 6/8/2020 5:31:18 PM



- Newtown Creek Study Area
- ~ Waterbody
- Open Space
- Navigation Channel
- ▲ Phase 1 USEPA-Identified NAPL Coring Station

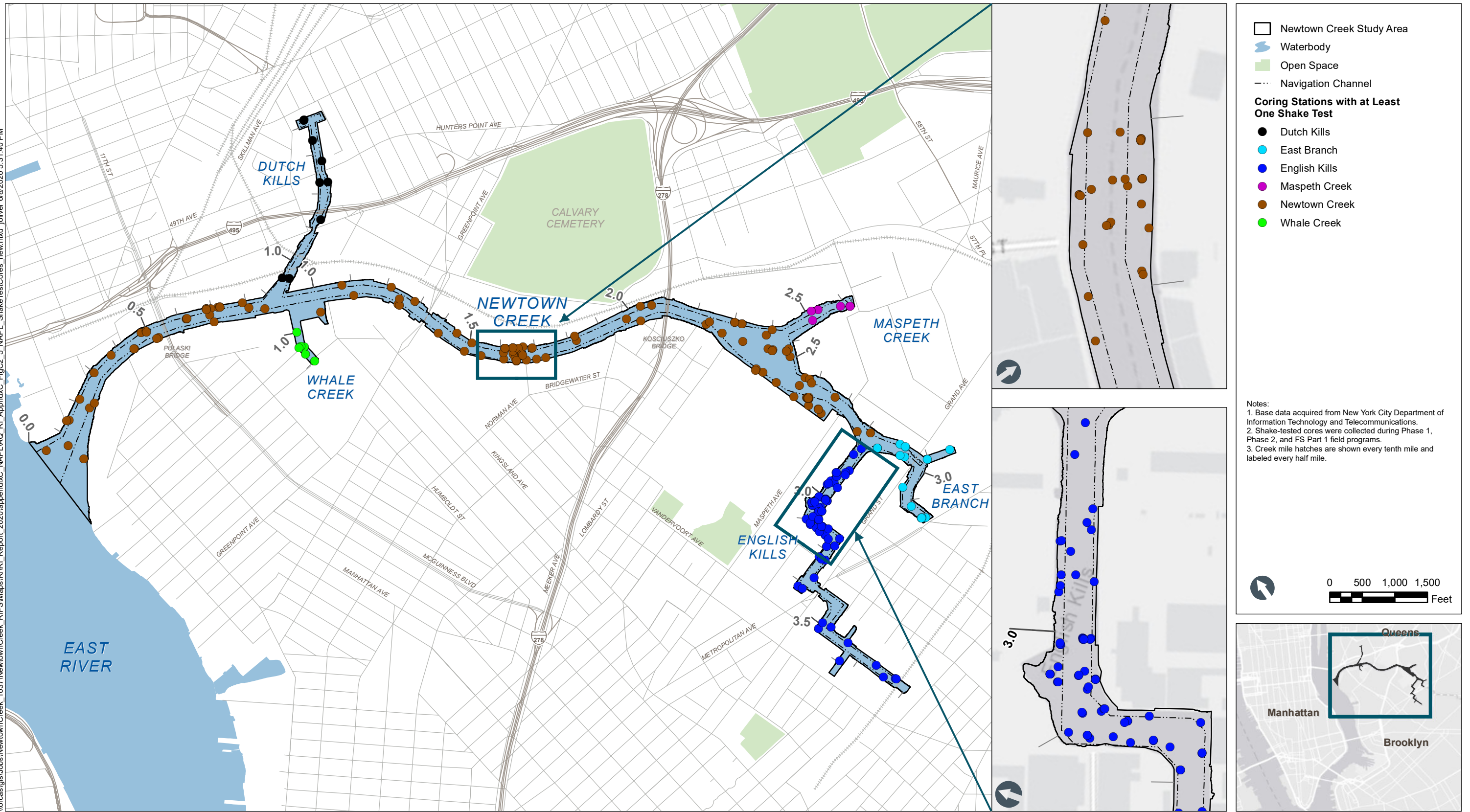
Notes:  
 1. Base data acquired from New York City Department of Information Technology and Telecommunications.  
 2. Creek mile hatches are shown every tenth mile and labeled every half mile.



DRAFT

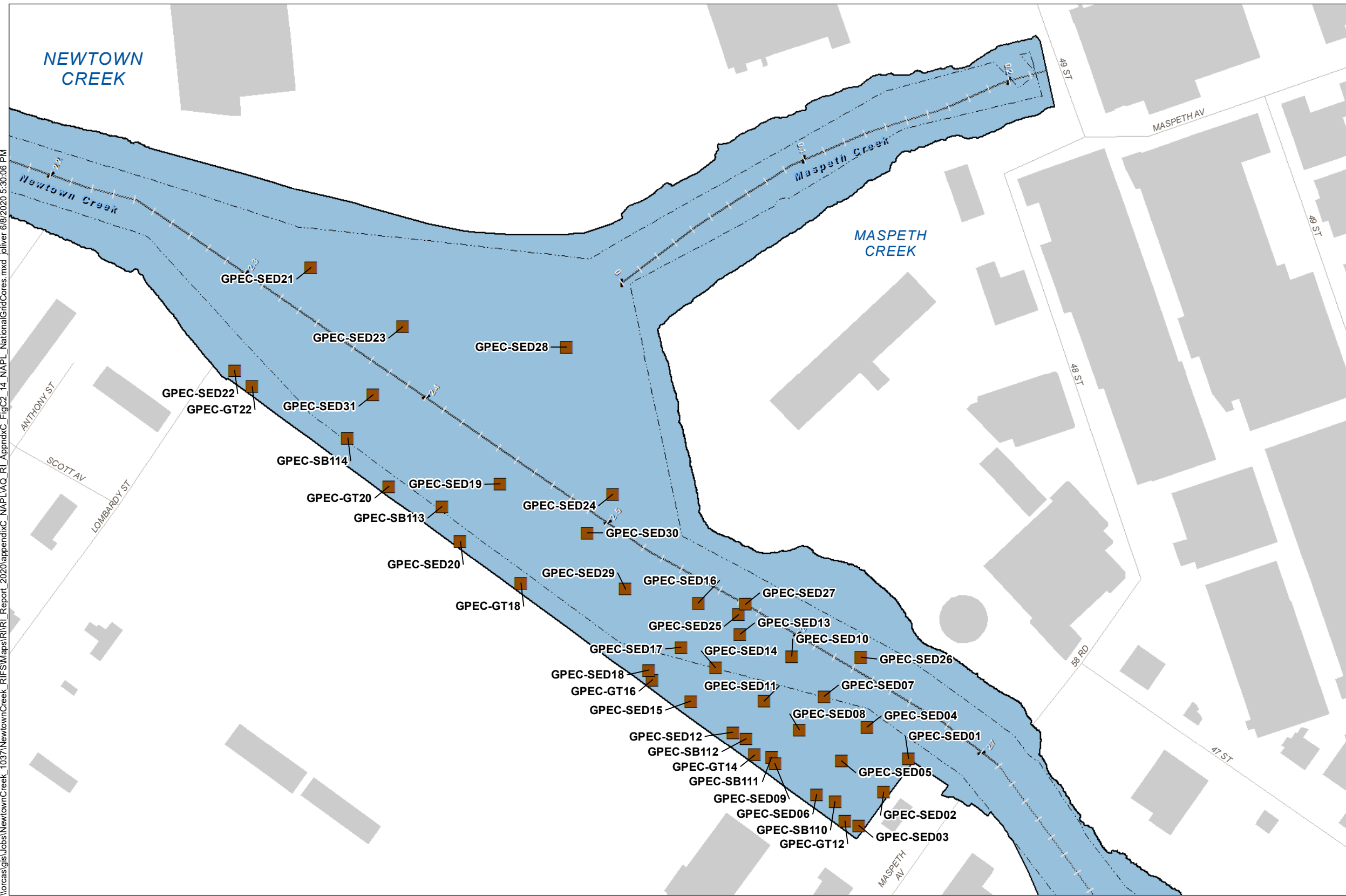
**Figure C2-4**  
 Phase 1 USEPA-Identified Cores  
 NAPL Evaluation  
 Newtown Creek RI/FS

\\orca\gis\Jobs\NewtownCreek\_1037\NewtownCreek\_RIFS\Maps\RI\RI\_Report\_2020\appendixC\_NAPL\AQ\_RI\_AppendC\_FigC2\_5\_NAPL\_ShakeTestCores\_new.mxd joliver 6/8/2020 5:31:40 PM





\\orcaas\gis\Jobs\NewtownCreek\_1037\NewtownCreek\_RIFS\Maps\RI\RI\_Report\_2020\appendixC\_NAPL\AQ\_RI\_AppendC\_FigC2\_14\_NAPL\_NationalGridCores.mxd\_joliver 6/8/2020 5:30:06 PM



**Legend**

- Newtown Creek Study Area
- Waterbody
- Building Footprint
- Navigation Channel
- Creek Mile
- National Grid Coring Station

**Notes:**

1. Base data acquired from New York City Department of Information Technology and Telecommunications.
2. Cores collected by GEI on behalf of National Grid between 2009 and 2010.
3. Creek mile hatches are shown every hundredth mile and labeled every tenth mile.

0 100 200 300 Feet

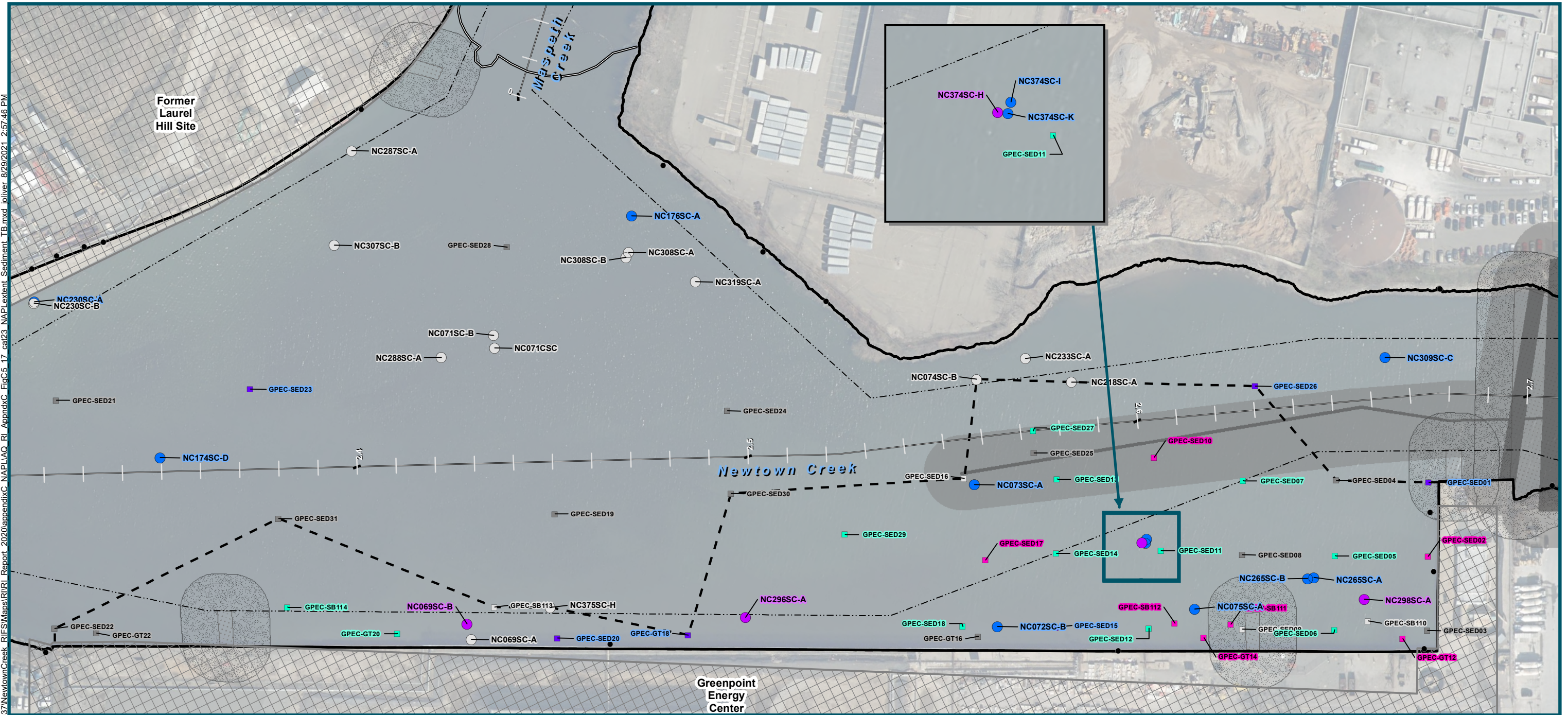


DRAFT

**Figure C2-14**  
National Grid Cores  
NAPL Evaluation  
Newtown Creek RI/FS



\\orcas\gis\Jobs\NewtownCreek\1037\NewtownCreek\_RIFS\Map\RI\RI\_Report\_2020\appendixC\_NAPL\AQ\_RI\_AppendC\_FigC5.17\_cat23\_NAPLExtent\_Sediment\_TB.mxd Joliver 8/29/2021 2:57:46 PM



<ul style="list-style-type: none"> <li><span style="border: 1px solid black; display: inline-block; width: 15px; height: 10px; margin-right: 5px;"></span> Newtown Creek Study Area</li> <li><span style="border-bottom: 1px dashed black; width: 20px; margin-right: 5px;"></span> Navigation Channel</li> <li><span style="border-bottom: 2px solid black; width: 20px; margin-right: 5px;"></span> Boom</li> <li><span style="border-bottom: 1px solid black; width: 20px; margin-right: 5px;"></span> Creek Mile</li> <li><span style="border-bottom: 1px dashed black; width: 20px; margin-right: 5px;"></span> Combined Sewer Overflow</li> <li><span style="display: inline-block; width: 10px; height: 10px; border-radius: 50%; border: 1px solid black; margin-right: 5px;"></span> Outfall</li> </ul>	<p><b>Utility Crossing</b></p> <ul style="list-style-type: none"> <li><span style="display: inline-block; width: 15px; height: 10px; background-color: gray; margin-right: 5px;"></span> FOIA</li> <li><span style="display: inline-block; width: 15px; height: 10px; border: 1px dotted gray; margin-right: 5px;"></span> NOAA</li> </ul> <p><b>Utility Crossing Buffer</b></p> <ul style="list-style-type: none"> <li><span style="display: inline-block; width: 15px; height: 10px; background-color: lightgray; margin-right: 5px;"></span> FOIA (50 feet)</li> <li><span style="display: inline-block; width: 15px; height: 10px; border: 1px dotted lightgray; margin-right: 5px;"></span> NOAA (50 feet)</li> </ul>	<ul style="list-style-type: none"> <li><span style="border: 1px dashed black; display: inline-block; width: 15px; height: 10px; margin-right: 5px;"></span> Potential Upland NAPL Site<sup>2</sup></li> <li><span style="border-bottom: 2px dashed black; width: 20px; margin-right: 5px;"></span> Category 2/3 NAPL Extent in Sediment</li> </ul>	<p><b>NAPL Category for Sediment</b></p> <ul style="list-style-type: none"> <li><span style="display: inline-block; width: 10px; height: 10px; border: 1px solid gray; border-radius: 50%; margin-right: 5px;"></span> Category 1A</li> <li><span style="display: inline-block; width: 10px; height: 10px; border: 2px solid blue; border-radius: 50%; margin-right: 5px;"></span> Category 1B</li> <li><span style="display: inline-block; width: 10px; height: 10px; border: 2px solid orange; border-radius: 50%; margin-right: 5px;"></span> Category 2</li> <li><span style="display: inline-block; width: 10px; height: 10px; border: 2px solid purple; border-radius: 50%; margin-right: 5px;"></span> Category 3</li> </ul>	<p><b>National Grid Most Notable NAPL Observation in Sediment</b></p> <ul style="list-style-type: none"> <li><span style="display: inline-block; width: 10px; height: 10px; background-color: magenta; margin-right: 5px;"></span> Saturated</li> <li><span style="display: inline-block; width: 10px; height: 10px; background-color: cyan; margin-right: 5px;"></span> Coated</li> <li><span style="display: inline-block; width: 10px; height: 10px; background-color: purple; margin-right: 5px;"></span> Blebs</li> <li><span style="display: inline-block; width: 10px; height: 10px; background-color: gray; margin-right: 5px;"></span> Sheen</li> <li><span style="display: inline-block; width: 10px; height: 10px; border: 1px solid gray; margin-right: 5px;"></span> No Visual Observation</li> </ul>	<p>Notes:</p> <ol style="list-style-type: none"> <li>1. Aerial imagery acquired from New York State Department of Homeland Security and Emergency Services (2016).</li> <li>2. Upland sites of interest with potential NAPL were identified by the U.S. Environmental Protection Agency and Newtown Creek Group.</li> <li>3. Cores used in the NAPL Evaluation (Appendix C of the RI Report) were collected during the Phase 1, Phase 2, and FS Part 1 field programs, as well as cores collected by GEI, on behalf of National Grid in 2009 and 2010.</li> <li>4. NAPL Categories are based on the most notable shake-test in sediment for each core.</li> <li>5. Creek mile hatches are shown every hundredth mile and labeled every tenth mile.</li> </ol>	<div style="text-align: center;"> <p>Feet</p> </div>	
--	--	--	---	--	---	--	--

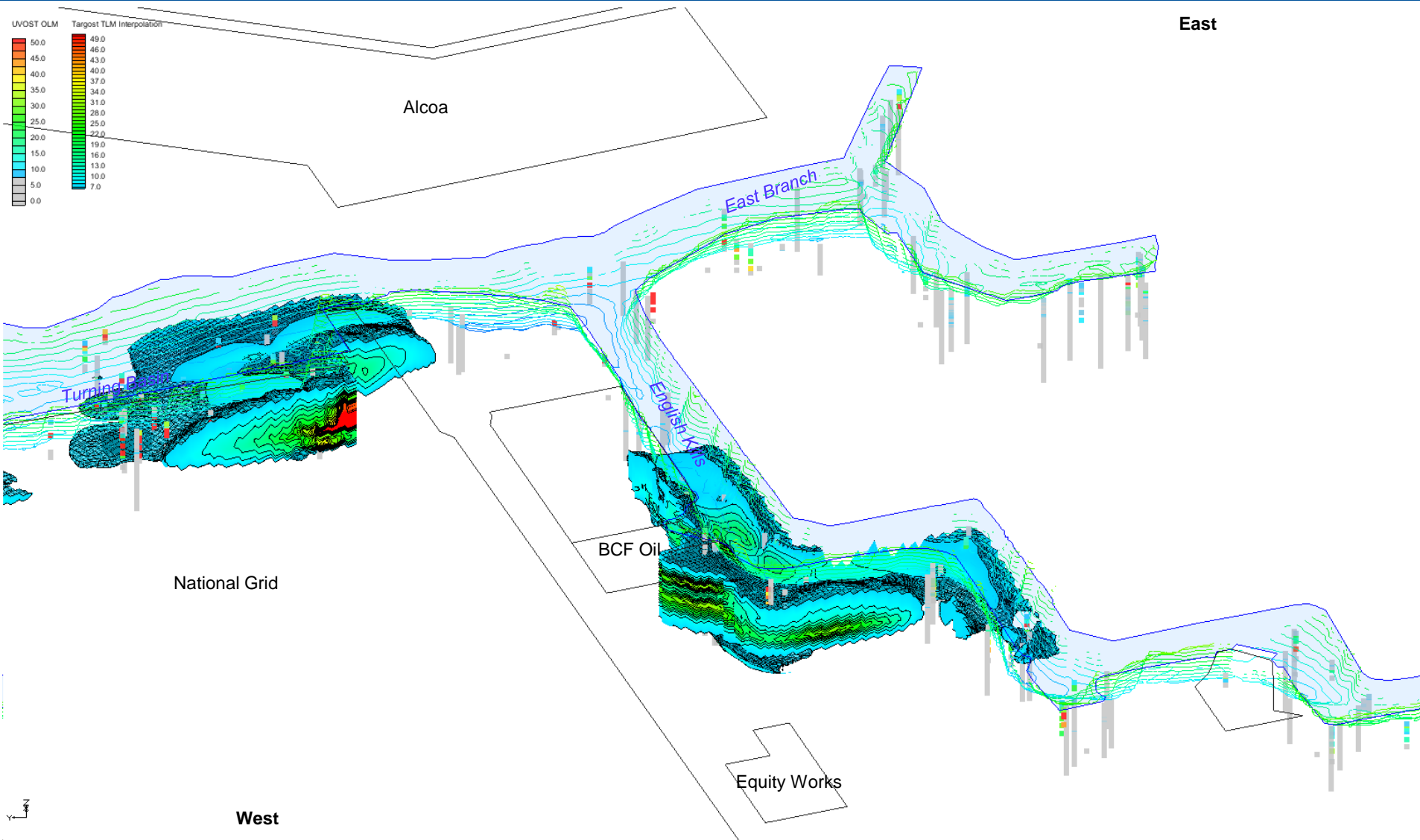
**Figure C5-17**  
 Turning Basin Category 2/3 NAPL Extent in Sediment  
 NAPL Evaluation  
 Newtown Creek RI/FS







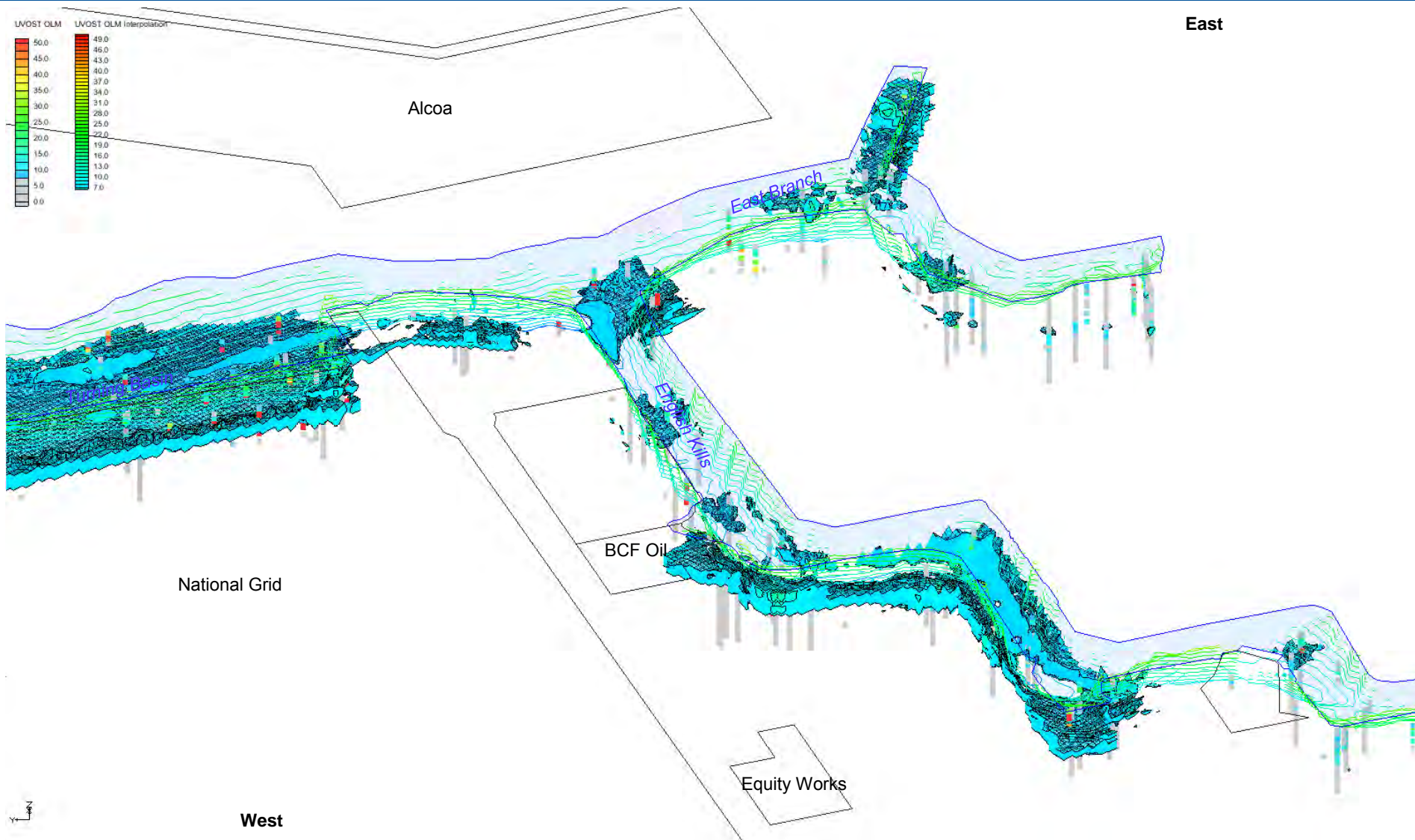
# TarGOST Tar-Like Material



Turning Basin and English Kills –TarGOST Tar-Like Material %RE Interpolation  
**Slide Taken From 12/1/16 NYC Presentation to EPA**



# UVOST Oil-Like Material



Turning Basin and English Kills – UVOST Oil-Like Material %RE Interpolation