



Department of
Environmental
Conservation

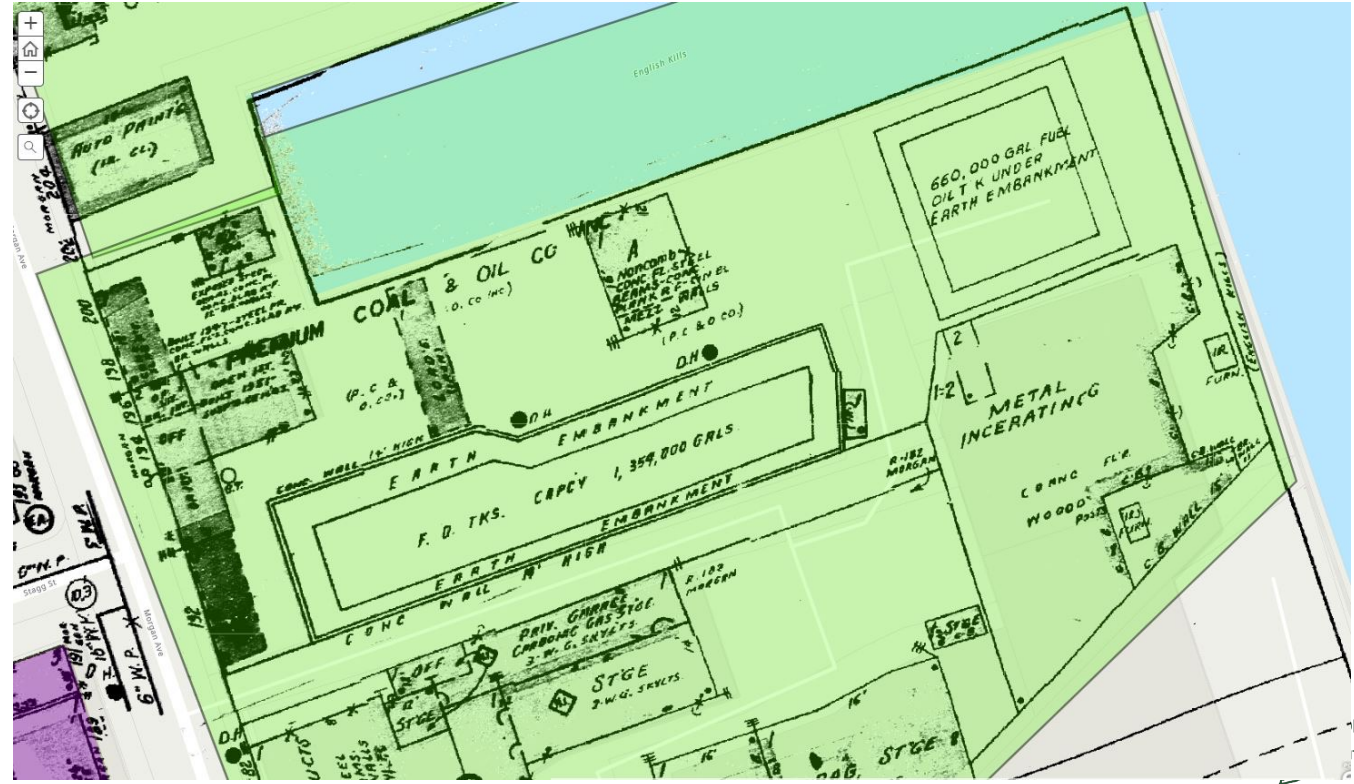
Newtown Creek

Upland Site Characterization – Part 1

Seep and Shoreline Observation

- Conducted August and September 2021
- Identify/sample seeps and characterize shoreline
- DEC issued Data Summary Report 3/31/22
- One component of the Upland Site Characterization

Former Morgan Oil

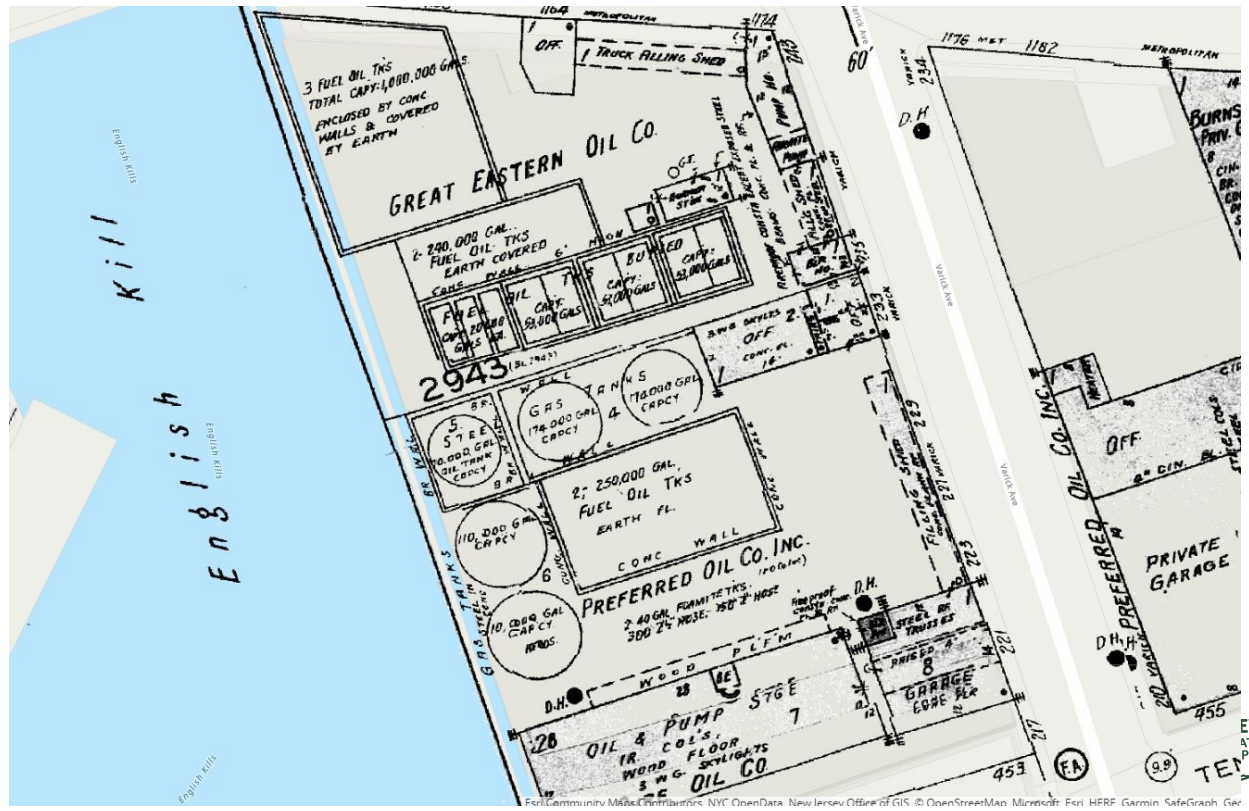








Former Manhattan Polybag



For Community Maps and Reports: NYC OpenData, New Jersey Office of GIS © OpenStreetMap, Microsoft, Esri, HERE, Garmin, SafeGraph, Geo







58-08 48th Street, Maspeth





12:34 PM 8/20/21

111.7° N: T
Lat: 40.721731° N Lon: 73.924667° W



12:38 PM 8/20/21

12.4° N: T
Lat: 40.721720° N Lon: 73.924569° W

NEW YORK
STATE OF
OPPORTUNITY

Department of
Environmental
Conservation



Department of
Environmental
Conservation

Kinder Morgan Terminal





17:06 PM 9/9/21

189.6° N: T
Lat: 40.730402° N Lon: 73.938915° W

NEW YORK
STATE OF
OPPORTUNITY

Department of
Environmental
Conservation