



Department of
Environmental
Conservation

Newtown Creek Upland Study

Community Advisory Group Meeting

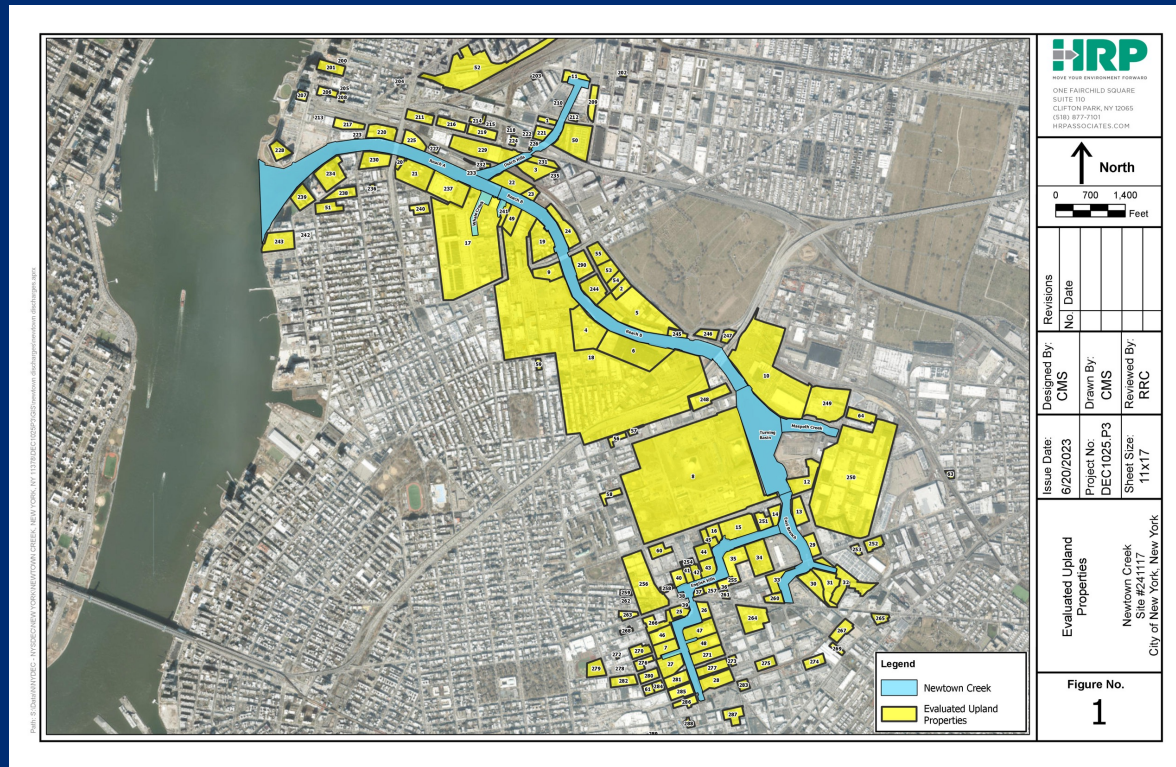
July 26, 2023

Study Objectives

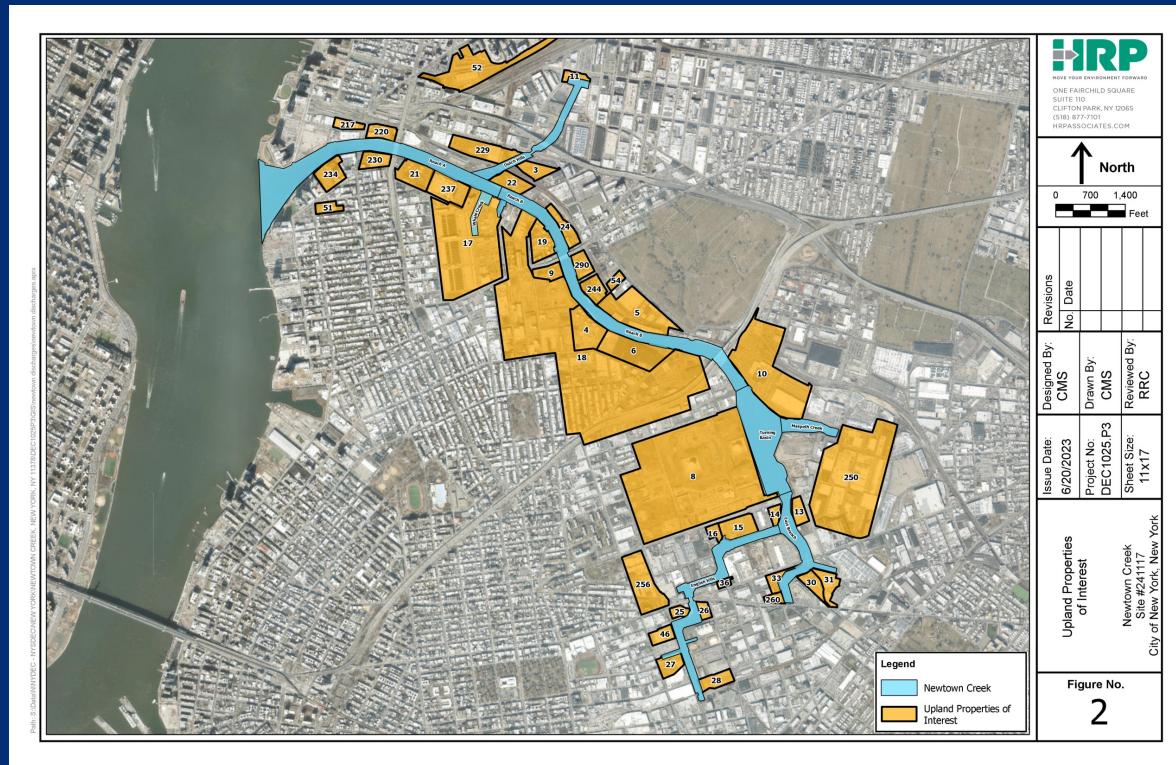
- Identify potential upland sources of contamination
 - Property history, recognized environmental conditions, prior or current regulatory involvement
- Field observation and sampling
 - Identify discharges of contamination (e.g.; oil, sheen)
 - Groundwater seep sampling
 - Document shoreline conditions



Upland Properties Evaluated



Properties of Interest



Applying the Upland Study

- Evaluate and investigate properties identified as part of the Upland Study
- Incorporate upland properties into NYSDEC remedial program, as necessary
- Ensure all upland site remedies are protective of human health and the environment



Thank You

Michael Haggerty, QEP

NYSDEC

Project Manager

625 Broadway

Albany, NY 12233-7016

E-mail: michael.haggerty@dec.ny.gov

Phone: (518) 402-9688

Connect with us:

Facebook: www.facebook.com/NYSDEC

Twitter: twitter.com/NYSDEC

Flickr: www.flickr.com/photos/nysdec



Department of
Environmental
Conservation